

February 2022

Autism|eye

For parents and professionals

[HOME](#) [WHAT IS AUTISM](#) [ABOUT US](#) [NEWS](#) [ADVERTISE](#) [DIRECTORY](#) [CONTACT](#)

Welcome to the
Autism Eye Newsletter



News



We pay a fortune to hurt people, says MP

Study finds causes of premature death

Products & services

Looking for schools, sensory equipment or other support? Click the categories below.

Events

Furniture

Nutrition

Resources

Sensory equipment

Schools and supported living

Hundreds of millions are spent on services that harm people with autism and learning disabilities, says Sir Robert Buckland, Member of Parliament and autism father...

Multiple health problems and overmedication underlie premature deaths in people with learning disabilities and epilepsy, with no coherent approach to treatment...

Schools and supported living

Therapy

Training

Independent Specialist Colleges

Soft play

Solicitors



Patient is 'fed through a hatch'



> Give disabled Covid jab, judges rule >

Stars of the Month



Daniel Wakeford, Tara Halvai and Harvey Price

Our three stars of the month are setting out to challenge common misconceptions, campaign for social change and demonstrate how they have overcome obstacles to lead rewarding lives.

The three are not only on the autism spectrum, but also have a learning disability – and are among an 18-strong group called The Myth Busters, being launched today (16 February) by charity Mencap.

They will represent the diversity of the learning disability

Announcements

Autism: Creating Aspirational Futures – virtual conference launch

[... Read More](#)

Autism diagnosis can change lives – for the better

[... Read More](#)

List of holidays announced

[... Read More](#)

Finding your purpose: reflections on a near-death experience and serving the autistic community

[... Read More](#)

Blog: What has changed in the field of early diagnosis & interventi

community and try to bust myths such as learning disability being the same as dyslexia (believed by 40 per cent of people in a survey) and that it relates to a mental health issue (believed by 28 per cent in the survey).

Daniel Wakeford (above left) is a singer-songwriter from Brighton who rose to fame on Channel 4's series *The UnDateables*. He describes himself as a "rock-popstar with autism". His band, the Daniel Wakeford Experience, is releasing an album this year. He dreams of representing the UK in the Eurovision Song Contest.

Tara Halvai (above centre) is an artist, swimmer and gymnast who lives in an independent living home close to her mum and sister in West London. She has mainstream awards for swimming and is a member of the National Gymnastic Association for trampolining. She is also a member of three theatre groups for people with a learning disability and creates art designs for [ARTXV](#), a collective for neurodivergent artists.

Harvey Price (above right), the first-born son of media personality Katie Price, is now a student. His mum was told he would never walk or talk, yet Harvey has defied the odds and started at a residential college in Cheltenham, where he has taken the first steps towards independent living. Harvey is also an artist who loves painting pictures of frogs. He said of joining the group: "Harvey can do lots of things!"

For more information about the Myth Busters, [click here](#).

Events

[See All Events](#)

Live webinar: Understanding Dyspraxia



21 FEBRUARY 2022

A live webinar for parents & carers, presented by Dyspraxia Foundation trustee, Dr Sally Payne

Reading, writing and spelling intervention



24 FEBRUARY 2022

A live webinar presented by Colin Foley, National Training Director for the ADHD Foundation

SEN Law Conference 2022



1 MARCH 2022

This one-day specialist conference will provide the latest legal updates across all aspects of this fast-moving area of law

Slindon College Open Morning



12 MARCH 2022

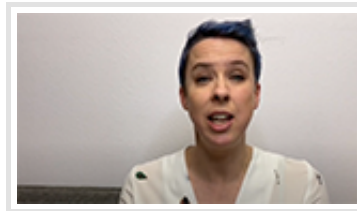
Come and see Slindon College, a day and boarding school for boys who benefit from a supportive learning environment

Videos



Sensory processing and ASD

An in-depth look at sensory processing issues in autism by Virginia Spielmann, executive director of the STAR Institute for Sensory Processing Disorder in Colorado.



What is sensory processing?

A shorter explanation by Virginia Spielmann of sensory processing and integration — in other words, how we feel the world around us and how we feel ourselves in the world.

Feature





Real-life learning

Since last year, parents have received a helping hand when it became compulsory for schools in the UK to teach PSHE – personal, social, health and economic studies. Fiona McNeill reports

[Read More](#)