

News, Events, Announcements, Feature, Videos.

June 2022

**Autism**|eye

*For parents and professionals*

[HOME](#)

[WHAT IS AUTISM](#)

[ABOUT US](#)

[NEWS](#)

[ADVERTISE](#)

[DIRECTORY](#)

[CONTACT](#)

Welcome to the



## News



### [New laws will target long-stay hospitals](#)

[New mental health laws will make it harder to detain autistic people and people with a learning disability in long-stay hospitals, according to the UK Government...](#)



### [Politician aims to tighten restraint law](#)

[Newly elected politician Dr Patricia O'Lynn, of the Alliance Party, has put forward a Private Members' Bill to offer greater protection for vulnerable children in Northern Ireland...](#)



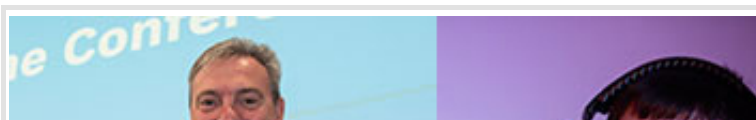
### [Exercise shown to reduce anxiety](#)



### [Study boosts ketogenic diet](#)

---

## Star of the Month





## International Centre for Life, Newcastle

Our Star of the Month demonstrates how well it's possible for visitor attractions to embrace being autism-friendly.

In fact, earlier this month the International Centre for Life (referred to simply as Life by those who know it) won an international award for its innovative work with autistic communities. Out of more than 320 science centres and museums across Europe, it walked away with one of only two special awards at a ceremony in Heilbronn, Germany.

The award recognises the partnership between Life and the North East Autism Society (NEAS) and their online support of the autistic community during the Covid-19 pandemic. What started as a small Facebook group involving just six families grew into an online programme with an audience of more than 13,000.

Life worked with NEAS to create videos showing accessible science demonstrations, such as how to make a balloon-powered mini-car and experiments with chocolate. This developed into a programme of videos and weekly Zoom chats, which attracted increasing engagement.

David Jones (pictured above left), community liaison manager at Life, received the award at a ceremony attended by more than 1,000 people.

The centre and NEAS began working together in 2018, with Life becoming a support hub for autistic children and their parents. Young people helped to shape the centre's layout and the design of new exhibits. They have also helped to run Relaxed Sunday Sessions (dedicated quiet time for autistic people). Our picture above right was taken during one of these sessions.

Sharon Ament, director of the Museum of London and chair of the awards judging panel, said: "This is a remarkable project that has touched our hearts as well as our heads. We were particularly impressed by the huge personal impact that the Life project has made for participants."

A short film about the Life/NEAS partnership can be viewed [here](#)

---

## Events

[See All Events](#)

---

### [The Autism Show London](#)

**[17-18 JUNE 2022](#)**

[If you're looking for information and direction pre or post diagnosis, are facing daily challenges, or approaching significant transition points, then The Autism Show can help you.](#)

### [Strategies to support social success](#)

**[21 JUNE 2022](#)**

[A live webinar with Anne-Marie Harrison from Ideas Afresh Education, exploring strategies to support social success in neurodiverse children and young people.](#)

---

### [Introduction & application to the SCERTS model](#)

**[23-24 JUNE 2022](#)**

[Using the SCERTS curriculum & practice principles to design programming for children with Autism Spectrum Disorder. Course Led by Emily Rubin, MS, CCC-SLP Director.](#)

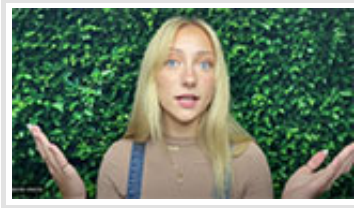
### [Free 'preparing for adulthood' transitions event for families](#)

**[24 JUNE 2022](#)**

[Dimensions is hosting a free 'preparing for adulthood' online event for any family whose child is leaving specialist education in the summer of 2023 or 2024 \(or later\).](#)

---

## Videos



[Spotting the signs of autism in schools](#)

[Good Morning Britain focuses on a film made to help teachers in identifying autism in pupils](#)

[8 signs of autism in school - what I wish teachers saw](#)

[Paige Layle talks about school life and how teachers failed to spot her autism](#)

# Feature



## [They are what you feed them](#)

What children eat can impact their behaviour and their mental and physical wellbeing. Nutritional therapist Stella Chadwick identifies major food offenders and comes to the rescue with some healthy alternatives

[Read More](#)

Products & services

Looking for schools, sensory equipment or other support?

Click the categories below.

Events

Furniture

Nutrition

Resources

Sensory equipment

Schools and supported living

Therapy

Training

Independent Specialist Colleges

Soft play

Solicitors

## Announcements

Blog: Challenges vs benefits of detecting autism early

[... Read More](#)

New Chewbuddy range – which one will you ‘chews’?

[... Read More](#)

Join the Tes SEND Show 2022 to celebrate our 30th anniversary!

[... Read More](#)

Spend this autumn in Norway

[...](#)

