



AUTISM RESEARCH INSTITUTE  
*Autism is Treatable*

## Free Webinars

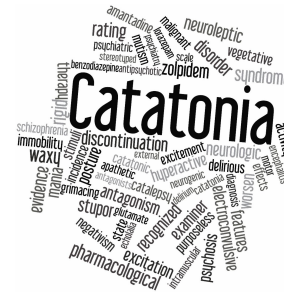


### **Coronavirus Impact: Talking to Kids About Changing Schedules, Altered Plans, and Disruption**

Amanda Tami, LPC, BCBA  
The Johnson Center for Child Health  
and Development

Thursday, April 30th  
1 p.m. Eastern (U.S.).

[Register](#)



### **Catatonia and Autism Spectrum Disorders**

**a**  
Robert L. Hendren, D.O.  
University of California, San  
Francisco

**a**  
Wednesday, May 13th  
1 p.m. Eastern (U.S.)

[Register](#)



### **Coping with COVID-19: ARI's live webinars, online tools help families and individuals**

• **Free presentations** offering evidence-based strategies to manage at home during extended school

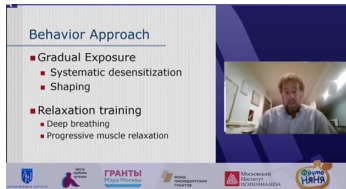


strategies to manage at home during extended school closures

- **Social stories** and **short videos** on hygiene and medical procedures
- **Physician resources** for managing patients diagnosed with autism

[ARI's COVID-19 Resources](#)

## Moscow Conference Moves Online



### **Autism Challenges Conference Moves Online: Live Streaming this April-May**

ARI Executive Director Stephen Edelson, PhD, presented remotely during the first day of the "Autism Challenges and Solutions" conference earlier this week. Online presentations for the Moscow-based event continue weekly through May. **Learn More**

## Can't Join Us Live?

Visit [Autism.org](https://www.autism.org) to check out free expert presentations on dozens of topics including medical issues, research findings, educational and behavioral strategies, and more.

[Learn More](#)



### **Thanks to You, We're Moving Research Forward!**

ARI continues to pioneer research, outreach, and cooperative efforts with other organizations worldwide. We work to support the health and well-being of people affected by autism through innovative, impactful research and education.

[Give Now](#)

**Stay Connected**

